



**Beginning with Habitat (BwH)**  
equips Maine communities, landowners, and conservation partners with tools to protect, restore, and connect important habitats and ecosystems in a changing climate.  
[www.beginningwithhabitat.org](http://www.beginningwithhabitat.org)

## Habitat Connectivity

### Conserved Lands, Undeveloped Habitat Blocks & Habitat Connectors

## Roque Bluffs

*This map is nonregulatory and is intended for planning purposes only*



- Area of Interest
- Organized Towns
- Impervious Surface
- Focus Areas of Statewide Ecological Significance
- Maine Stream Habitat Viewer Road Stream Crossings
  - Barrier
  - Potential Barrier
  - No Barrier

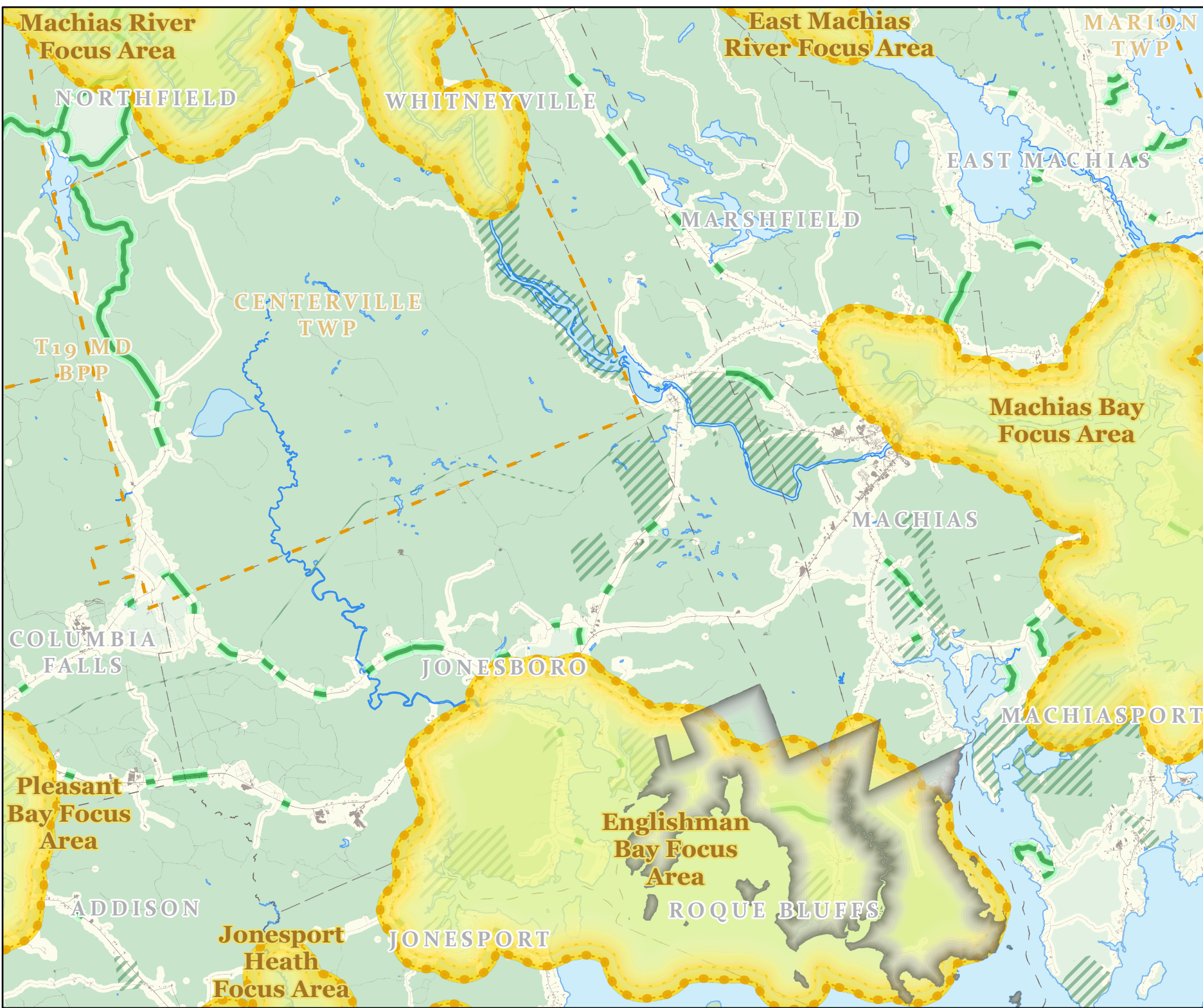
- Habitat Blocks**  
Comprehensive Plan Review Criteria Rule (DACF Chapter 208) requires blocks >500 acres be considered important natural resources for town comprehensive planning.
  - 0-500 Acres
  - 500 + Acres

- Development Buffer
- Habitat Connectors**  
Likely Road Crossing Areas for Wildlife

- Conserved Lands**
  - Fee and Easement Conservation Land

## Focus Areas of Statewide Ecological Significance

*Explore more Focus Areas on the BwH Map Viewer*



**TOWNSHIP BOUNDARIES**  
ME Office of GIS (2021)  
IMPERVIOUS  
CCAP NOAA Impervious land cover (2022)  
HYDROLOGY  
US Geological Survey (2016)

**CONSERVED LANDS**  
ME Dept of Ag., Cons., and For.,  
Land Use Planning Comm'n,  
ME Dept. of Inland Fisheries and Wildlife (2024)  
UNDEVELOPED HABITAT BLOCKS  
Beginning with Habitat (2020)

**FOCUS AREAS & HABITAT CONNECTORS**  
Beginning with Habitat (2023)  
MAINE STREAM HABITAT VIEWER CROSSINGS  
ME Dept. of Inland Fisheries and Wildlife (2022)



Map Prepared by  
Maine Department of Inland  
Fisheries & Wildlife  
April 2025

